



School Improvement Plan

Old Mill High School

School Year 2011-2012

School Improvement Team Members

School Improvement Team Members	Signature	Position
James Todd		Principal
Kere' Boyd		Assistant Principal/ Community Engagement Liaison
Kerri Buckley		Assistant Principal/Academic Liaison
Tom Fitzgerald		Assistant Principal/ Community Engagement Liaison
Marc Procaccini		Assistant Principal/Safe and Supportive Liaison
Stacey Smith		Assistant Principal/SIT Liaison
Rick Tubman		Assistant Principal/ Academic Charter
Angela Bernholz		Student Support Services Representative
Benjamin Shea		School Testing Coordinator
Kenneth Barrett		Counseling Representative
Patricia Newgent		IB Coordinator
Nicole Brzuchalski		MYP Coordinator
Ruth Goldstraw		Mathematics D.C.
Sean Swanson		English D.C.
Katie Feuerherd		Social Studies D.C.
Brenda Poist		Science D.C.
Ellen Theloosen		Special Education D.C.
Suzan Eichhorn		ESOL
Kim Spence		Foreign Language D.C.
Bruce Lawton		Physical Education D.C.
Ginny Langford		Signature/UMUC Representative
Denise Parker		Equity Liaison
Sandy Nee-Jackson		Academic Charter/Facilitator
Carolyn Wallace		Academic Charter/ Manager
Michelle Sanders		S & S Charter/ Facilitator
Kay Dumbach		S & S Charter/ Manager
David Greene		Community Engagement Charter/ Facilitator
Robin Kessler		Community Engagement Charter/ Manager
Lisa Shore		Parent Representative

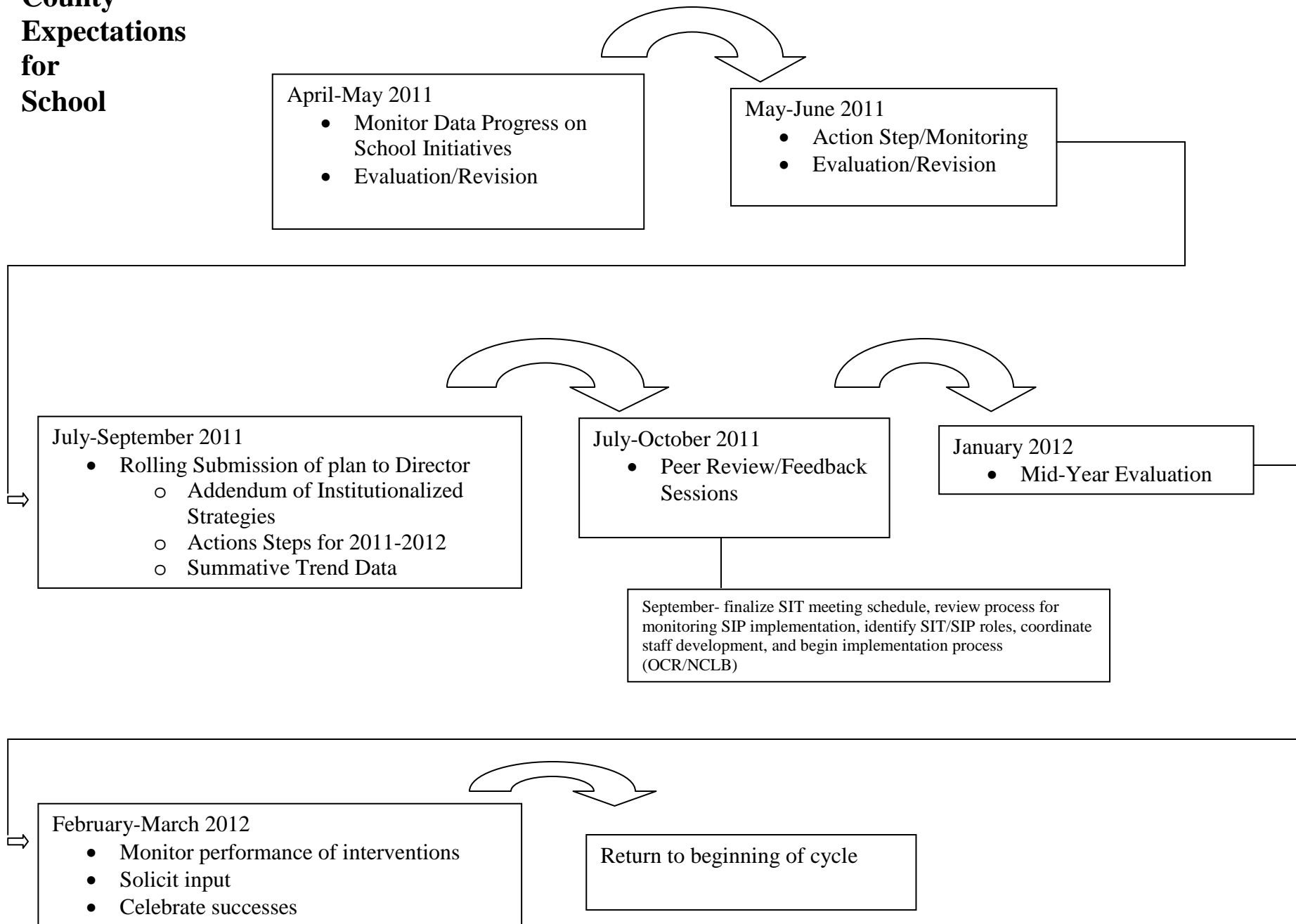
Old Mill High School

Principal- Mr. James Todd / School Improvement Liaison- Stacey M. Smith, Assistant Principal

Academic Charter	Safe and Supportive Charter	Community Engagement Charter
F- Nee-Jackson / M- Wallace	F- Sanders / M-Dambach	F- Greene / M- Kessler
Buckley/Tubman	Procaccini	Boyd/Fitzgerald
Equity Team	Sunshine Team	Green School Team
Clarke	Beard	Bernstein
Cook	Blue	Bilberry
Coronado	Brendlinger	Blondell
Hansen	Drenning	Brooks
Liimatta	Einolf	Choudhary
D. Parker		Crema
AVID Team	Gnagey	Hendricks
Ascherl	Kraus	Humbert
Goldstraw	Mullen	Johnson
E. Green	Petrin	Kummerle
McQueary	K. Spence	Lauritzen
Norris	E-Free Team	D. Linnell
Wilson-Banard	Chacra	Mike Miller
MYP Team	Harris	Morgridge
Brzuchalski	Lloyd	Newman
James	Simmons	Stoian
Klug	Tapscott	Tambellini
McMahan	PBIS Team	Wiley
Newgent	Alford	Community Involvement Team
Ratti	Allemand	Cornetti
Wolfe	Amaral	Czachor
9th Grade Team	Bernholz	Kennelly
Bell	Bollinger	Lawton
Martin	Borc	Perdomo
McCormick	Broderick	Sherman
Reed	R. Brown	S. Spence

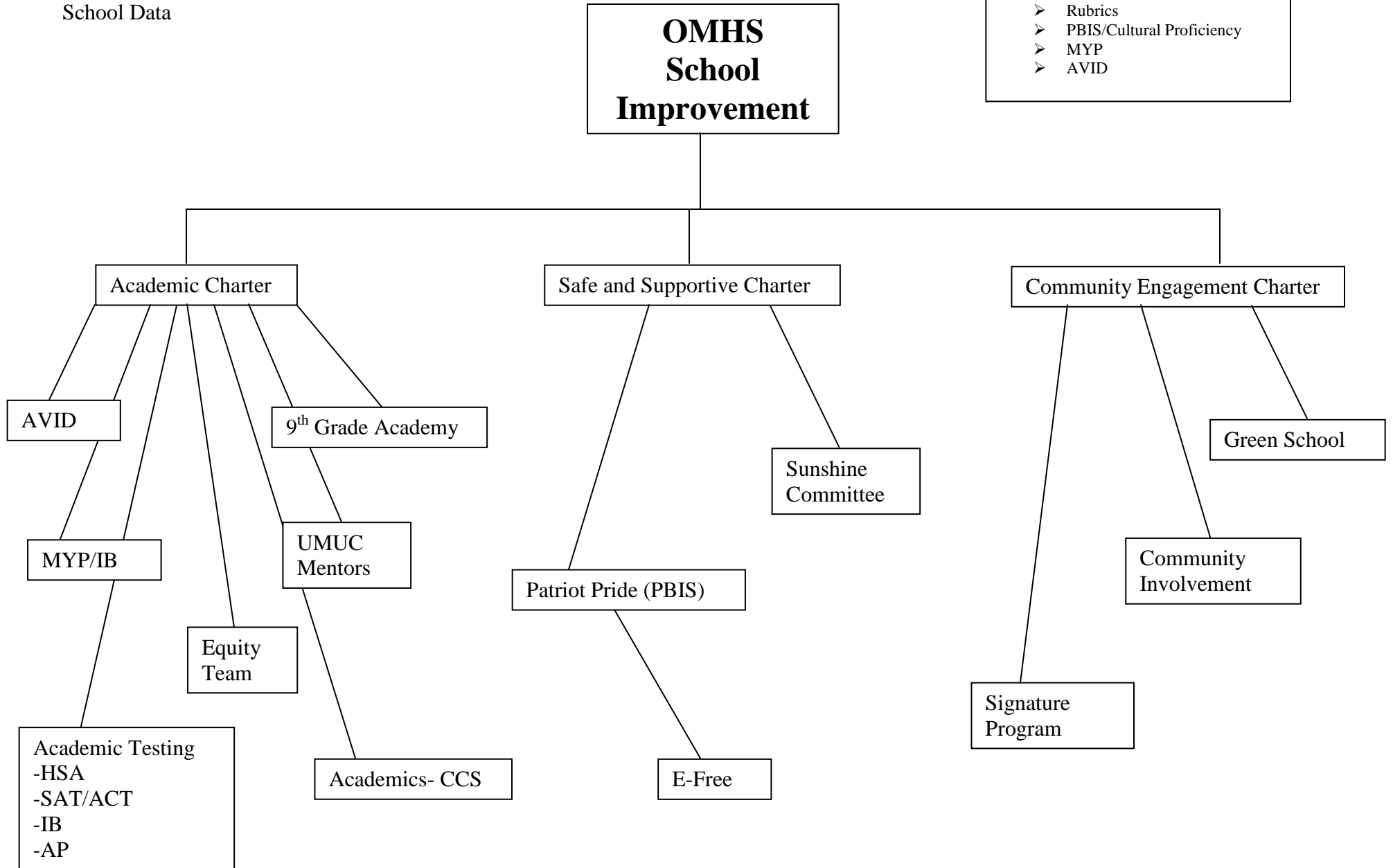
Sutherin	Cameron	VandeMark
Thomas	Cielewich	Volkov
Testing Team	Drazan	White
Clough	Edwards	Signature Team
Dorsey	Everitt	Barrett
Eichhorn	Ferragamo	Dickinson
Few	Gelinas	Donnelly
Hehl	Grim	Frick
Jones	Gulley	Langford
Klimes	Helms	Lindsey
Krupski	Hollywood	Motiram
Molnar	Illuzzi	Mat Miller
Schiller	Lehrter	Monroe
Shea	Levy	Poist
Swanson	A. Linnell	Postell
Theloosen	Nelson	Stemmler
UMUC Team	Queen	Turpin
Cunningham	Ragusa	Wetzel
K. Parker	Schaffer	Parent-, Student-
Snyder	Smalley	
Villwock	Smith	
Watts	Witham	
Academic Team- CCS	Parent-, Student-	
Davenport		
Emerson		
Feuerherd		
Fleck		
Gibson		
Gokay		
A. Green		
Maribao		
Saxon		
Parent- Patty Brown, Student-		

County Expectations for School



AACPS/ETAG
OMHS- Administration, Staff, Students,
Community
School Data

- ETAG/TLC- Professional Development
- Thinking Maps
 - FA/DI
 - Rubrics
 - PBIS/Cultural Proficiency
 - MYP
 - AVID



***Supporting Documentation (Attachment)
OMHS initiatives/TLC alignment**

Goal 1: Academic Achievement

- Preferential scheduling for *Passing the HSA* courses for select students
- Horizontal team meetings to plan instruction and analyze student data
- Utilize Achievement Series program to collect and sort data for Benchmarks
- Common Planning scheduled by department
- Plus Periods used to promote student achievement
- Counseling staff meets with upcoming seniors and school-wide senior monitoring in place
- AVID program actively recruiting and retaining students
- Advance Placement Informational Night held annually to disseminate information to parents/students
- Advance Placement potential letters mailed to students/parents for information regarding participation in classes
- PSAT administration annually for 9-11th grade
- Strategic scheduling for targeted student groups (IEP/504/AP, etc.)
- Monthly Professional Development meetings hosted for teachers/staff
- IEP Coordinator provides/monitors testing accommodations
- Corrective Reading and Cognitive Tutor programs in place
- Special Education teachers attend department specific meetings
- Implementation of County curriculum/pacing guides
- Twilight program offers credit recovery for ninth graders
- Orientation Night hosted in August for in-coming 9th graders and parents
- IB Parent Night
- Science Fair
- Content teams incorporate sample HSA questions on assessments/drills
- Rubrics utilized in all classes to support instructional expectations
- Study Hall offered for eligibility
- Tracking system in place for eligibility in athletics
- Counselors host summer senior meetings
- Athletics/Academics (IB) conduct middle school recruitment sessions
- Seminar Offerings are paired with Advanced Placement courses
- Academic Clubs- It's Academic, MESA, Mock Trial
- Identification system for test-takers of High School Assessments
- AP Test payment plan option for students
- Senior Intent- 2/4 year colleges based on MSDE senior exit survey- 100% participation

- Extra Help days built into the weekly calendar

Goal 2: Safe and Supportive Learning

- Decision Making Room (DMR) utilized as a behavioral intervention
- Lessons constructed for use in Alpha-Advisories on Fridays
- Student of the Month selection
- School- wide expectations posted in building – electronics, dress code, PBIS behaviors, etc.
- Tardy/Late policy posted in building/classrooms
- Staff in-service regarding suicide and child abuse reporting
- Crisis plan (red folder) presented and reviewed with staff annually
- Utilize school advocates
- ID Badges for staff and substitutes

Goal 3: Community Engagement

- Guidance hosts a series of Parent Nights on College Prep topics
- Naviance is used to establish course selections at OMHS for students
- Connect-Ed is utilized to communicate important/relevant information to community/parents
- *Oldmillhigh.org* is updated with key information pertaining to school/students
- Vertical teaming with the middle schools to support Green School initiatives

School Improvement Plan 2011-2012
Academic Charter

Goal 1: All students will reach high standards, as established by Anne Arundel County Public Schools and state performance level standards in English/Reading/Writing, Mathematics, Science and Social Studies. Achievement disparities among No Child Left Behind groups of students will be eliminated.

Goal Indicator: By the end of the 2011/2012 school year, 95% of Old Mill High School students in each NCLB student group will successfully complete both semesters of Algebra I by the end of the ninth grade.

Goal Indicator: By the end of the 2011/2012 school year, 100% of all OMHS students will pass the Maryland High School Assessments or Equivalent.

Goal Indicator: By the end of the 2011/2012 school year, 95% of grade 9, 10, and 11 diploma-bound students, enrolled at the time of the test, in each NCLB student group will have participated in the PSAT.

Goal Indicator: By the end of the 2011/2012 school year, 80% of Old Mill High School seniors in each NCLB student group will have completed at least one AP/IB or Honors course.

Goal Indicator: By the end of the 2011/2012 school year, 100% of Old Mill High School seniors in each NCLB student group who have been enrolled in at least one AP/IB course will have sat for an AP/IB examination.

Goal Indicator: By the end of the 2011/2012 school year, 75% Old Mill High School seniors in each NCLB student group who have sat for an AP/IB examination will have earned 3 or better on AP/IB examinations.

Goal Indicator: By the end of the 2011/1012 school year, 75% of all high school seniors in each NCLB student group in each high school will take the SAT, ACT, or the Accuplacer.

Goal Indicator: By the end of the 2011/2012 school year, all high schools will meet the graduation rate of 98% (for each NCLB student group) established by the Maryland State Department of Education).

Goal Indicator: By the end of 2011/2012 school year, 85% of all ninth grade students in each NCLB student group will have a cumulative Grade Point Average (GPA) of 2.0 or above.

School Improvement Plan 2011-2012
Academic Charter

Goal Indicator: By the end of the 2011/2012 school year, 95% of Old Mill High School students in each NCLB student group will successfully complete both semesters of Algebra I by the end of the ninth grade.

Statement of Need:

- By the end of 2010/2011 school year, 83.9% of Old Mill High School students had successfully completed both semesters of Algebra I by the end of ninth grade.
- 88.3% of white students had successfully completed both semesters of Algebra by the end of ninth grade while 79.0% were African American, 70.4% Hispanic, 77.8% Special Education, and 75.6% FARMS, 50.0% ELL students.

Annual Objective: By the end of the 2011/2012 school year, 95% of Old Mill High School students will have successfully completed both semesters of Algebra I by the end of ninth grade.

Action Steps	Person Responsible	Implementation Team	Resources/ Staff Development Needed	Monitoring Procedure/ Evidence	End Date/Check off when completed
Continue implementation of common syllabi used among horizontal teams for clear expectations among ninth grade students; utilize “SCOOP” acronym in all ninth grade classrooms	Ms. Goldstraw	Algebra Team	Common planning Resource Teacher Power Teacher	Power Teacher (Quarterly grades) Bi-Quarterly Data Meetings Algebra Team minutes	Quarterly Review 2011-2012
Utilize professional development (TLC) to create clear/concise expectations for the classroom/students. Deliver PD for Staff/teachers with the purpose of continued implementation: DI/FA, Thinking Maps, MYP, AVID strategies, and quality learning environments EQ	Ms. Goldstraw Ms. Smith	Algebra Team	Common planning Expert Trainers Lesson plans and activities	Meeting agenda Teacher “Peer” observations Administrative walk-throughs	June 2012
Conduct Administrative walk- throughs with specific foci regarding TLC Initiatives	Principal	Assistant Principals	Walk-through form	Walk-through forms- copy for teacher and administrator Leadership Meeting feedback	June 2012

Algebra team will meet weekly to 1. Collaboratively plan student instruction and develop higher order thinking questions embedded in instruction 2. Discuss struggling learners targeted for “tutorial” intervention in class	Ms. Goldstraw	Algebra Team	Common Planning Resource Teacher	Algebra Team minutes Sample questions/lessons	June 2012
--	---------------	--------------	-------------------------------------	--	-----------

Analyze data at bi-quarterly meetings and form responses/next steps for whole group, targeted student groups, and individual student needs EQ	Ms. Goldstraw Ms. Smith	Algebra Team	Common Planning Power Teacher	Meeting minutes Power Teacher Snap-shots	Quarterly Review 2011-2012
--	----------------------------	--------------	----------------------------------	---	-------------------------------

-Algebra-

School Improvement Plan 2011-2012
Academic Charter

Goal 1: All students will reach high standards, as established by Anne Arundel County Public Schools and state performance level standards in English/Reading/Writing, Mathematics, Science and Social Studies. Achievement disparities among No Child Left Behind groups of students will be eliminated.

Objective 1: HSA Algebra- By the end of the 2011/2012 school year, 100% of all diploma-bound students at Old Mill High School in each NCLB student group will pass the High School Assessment or equivalent in Algebra by graduation.

Statement of Need:

- By the end of 2010/2011 school year, 92.0% of Old Mill High School's 12th grade students had successfully passed the High School Assessment or equivalent in Algebra by graduation.
- 95.4% of white students passed the Algebra assessment while 85.1% were African American, 93.5% Hispanic, 46.7% Special Education, and 84.0% FARMS, 83.3% ELL students.

Objective 2: HSA Biology- By the end of the 2011/2012 school year, 100% of all diploma-bound students at Old Mill High School in each NCLB student group will pass the High School Assessment or equivalent in Biology by graduation.

Statement of Need:

- By the end of 2010/2011 school year, 91.5% of Old Mill High School's 12th grade students had successfully passed the High School Assessment or equivalent in Biology by graduation.
- 94.1% of white students passed the High School Assessment in Biology while 85.6% were African American, 93.5% Hispanic, 60.0% Special Education, and 83.2% FARMS, 83.3% ELL students.

Objective 3: HSA English 2- By the end of the 2011/2012 school year, 100% of all diploma-bound students at Old Mill High School in each NCLB student group will pass each of the High School Assessments, or equivalent in English 2, by graduation.

Statement of Need:

- By the end of 2010/2011 school year, 91.0% of Old Mill High School 12th grade students had successfully passed each of the High School Assessment or equivalent in English 2 by graduation.
- 96.0% of white students passed the English 2 High School Assessment, 83.4% of African Americans passed, 89.5% of Asians, 87.1% of Hispanics, 53.3% Special Education students, 83.2% of FARMS, 16.7% ELL students.

Action Steps	Person Responsible	Implementation Team	Resources/ Staff Development Needed	Monitoring Procedure/ Evidence	End Date/Check off when completed
Communicate through vertical/horizontal teaming to diagnose student needs and plan targeted interventions utilizing HSA student groups during Plus Period, Friday advisories, and Extra Help sessions offered on Tuesdays/Wednesdays after school EQ	Dept. Chair Persons	Team Leaders Teachers/Staff Administration	Student Focus Lists Plus Period Schedule Common Planning Content Resources provided by AACPS Power Teacher, Achievement Series, Dashboard	Attendance/ E-Free Log Student Progress/Grades Administrative Walk-throughs Meeting Minutes	June 2012 (On-going)
Communicate through vertical teaming with the middle schools to articulate with regards to academics and behavioral needs for ninth grade students EQ	Content Team Leaders	Content Teams Administration	Pre-Assessments Benchmarks/Achievement Series Discipline Data	Data Tracking Charts Achievement Series Data Meeting Minutes	June 2012
Embed TLC initiatives in daily lesson planning to differentiate learning to meet individual student needs -Technology -Reading in the Content Area/Vocabulary -MYP -AVID -Thinking Maps -FA/DI	Administration	Teachers/Staff	Ms. Raspa PD on Smartboards, Clickers, and Airliners Common Planning Professional Development by AACPS and OMHS	Formal/Informal Observations Lesson Plans Content Team minutes Attendance	June 2012
Embed theme of Signature Program "Economics and Finance" in unit planning to support thematic connections across the disciplines and strengthen individual student skills	Ms. Langford DCs	Teachers/Staff	Professional Development Trainings Common Planning Community support	Attendance Unit Planning Advisory Lessons	June 2012

-Algebra, Biology, English 2-

School Improvement Plan 2011-2012
Academic Charter

Goal Indicator: By the end of the 2011/2012 school year, 95% of grade 9, 10, and 11 diploma-bound students, enrolled at the time of the test, in each NCLB student group will have participated in the PSAT.

Statement of Need:

- In October 2010, 85.4% of grade 9, 10 and 11 diploma-bound students, enrolled at the time of the test, participated in the PSAT.
- 87.3% of the white students, 82.6% African-American, 89.9% Asians, 83.3% Native American, 80.5% Hispanic, 75.8% Special Education, 78.4% FARMS, and 51.7% ELL students.

Annual Objective: By the end of the 2011/2012 school year, 95% of all diploma-bound students at Old Mill High School, enrolled at the time of the test, in each NCLB student group will have participated in the PSAT.

Action Steps	Person Responsible	Implementation Team	Resources/ Staff Development Needed	Monitoring Procedure/ Evidence	End Date/Check off when completed
Clearly communicate the time, purpose and advantages of taking the PSAT EQ	Guidance DC STC	Administration STC Teachers/Staff Counselors	Translations of PSAT informational letters to parents' native languages Connect-ed Messages School Newsletter Announcements Posters	PSAT Test attendance	Oct 2011
ESOL students will test with ESOL teachers as proctors to increase comfort level EQ	STC	ESOL Liaison/Staff	Testing Location Map Teacher/Advisory assignments ESOL target list	Testing/Advisory assignments	Oct 2011

Implement English and Math initiatives to target top 10% of PSAT test takers in grades 9, 10, and 11 EQ	Guidance DC STC	English/Math teachers Counselors STC	Student PSAT Data Student/Teacher Schedules	PSAT Test Data Student Schedules	June 2012
---	--------------------	--	--	---	-----------

-PSAT-

School Improvement Plan 2011-2012 Academic Charter

Goal Indicator: By the end of the 2011/2012 school year, 80% of Old Mill High School seniors in each NCLB student group will have completed at least one AP/IB or Honors course.

Statement of Need:

- By the end of 2010/2011 school year, 85.4% of Old Mill High School seniors in each NCLB students group had completed at least one AP/IB or Honors course.
- 87.3% of white students completed at least one AP/IB course while 82.6% were African American, 80.5% Hispanic, 89.9% Asian, 75.8% Special Education, 78.4% FARMS, and 51.7% ELL students.

Annual Objective: By the end of the 2011/2012 school year, 80% of Old Mill High School seniors in each NCLB student group will have completed at least one AP/IB or Honors course.

Goal Indicator: By the end of the 2011/2012 school year, 100% of Old Mill High School seniors in each NCLB student group who have been enrolled in at least one AP/IB course will have sat for an AP/IB examination.

Statement of Need:

- By the end of 2010/2011 school year, 86.4% of Old Mill High School seniors in each NCLB students group had been enrolled in at least one AP/IB or honors course and had sat for an AP/IB examination.
- 89.5% of white students enrolled in at least one AP/IB or honors course and sat for an examination while 75.8% were African American, 75.5% Hispanic, 63.6% Special Education, 91.3% Asian, 82.0% FARMS, 62.5% ELL students.

Annual Objective: By the end of the 2011/2012 school year, 100% of Old Mill High School seniors in each NCLB student group will have enrolled in at least one AP/IB course will have sat for an AP/IB examination.

Goal Indicator: By the end of the 2011/2012 school year, 75% Old Mill High School seniors in each NCLB student group who have sat for an AP/IB examination will have earned 3 or better on AP examinations.

Statement of Need:

- By the end of 2010/2011 school year, 51.8% Old Mill High School seniors in each NCLB student group had sat for an AP examination and had earned a 3 or better.
- 57.1% white students who had sat for AP examination earned a 3 or better while 30.1% African American, 66.7% Hispanic, 100% Special Education, 64.3% Asian, 41.2% FARMS.

Annual Objective: By the end of the 2011/2012 school year, 75% Old Mill High School seniors in each NCLB student group will have sat for an AP examination and will have earned 3 or better on AP examinations.

Action Steps	Person Responsible	Implementation Team	Resources/ Staff Development Needed	Monitoring Procedure/ Evidence	End Date/Check off when completed
Host an Advanced Placement/IB information night for parents and students	Ms. Newgent Ms. Klimes	Dept. Chair Persons Counselors Scheduler IB/MYP Leader	Student Schedules Master Calendar	AP class enrollment data Event Sign-In Communication Artifacts	June 2012
Utilize professional development (TLC) to create clear/concise expectations for the classroom/students regarding implementation of DI/FA, Thinking Maps, MYP, AVID strategies, and quality learning environments	Administration	AP/IB Teachers	Professional Dev. Trainings Bi-Monthly AP/IB meetings	Meeting Minutes PD Presentation material Formal/Informal Observations	June 2012
Students enrolled in AVID will be required to enroll in at least one AP class by their senior year	Ms. Boyd Ms. Wilson-Barnard	AVID Team Counselors	AP class scheduling Student Intent	Student Schedules	June 2012
English, Science and Math will use the IB Access website to create mini-assessments to mirror Diploma Program assessments	Newgent	AP/IB/MYP Teachers	Exam Resources Website	Exit interviews Assessment	June 2012
Implement content specific study groups to meet individual student needs EQ	Ms. Newgent	AP/IB Teachers NHS Students	Planning Time Schedule	Student Attendance Data tracking of student scores AVID Club	June 2012

School Improvement Plan 2011-2012
Academic Charter

Goal Indicator: By the end of the 2011/1012 school year, 75% of all high school seniors in each NCLB student group in each high school will take the SAT, ACT, or the Accuplacer.

Statement of Need:

- By the end of the 2010-2011 school year, 60.5% of all high school seniors at Old Mill High School took the SAT.

Annual Objective: By the end of the 2011/2012 school year, 75% of all high school seniors in each NCLB student group at Old Mill High School will have taken the SAT, ACT, or the Accuplacer.

Action Steps	Person Responsible	Implementation Team	Resources/ Staff Development Needed	Monitoring Procedure/ Evidence	End Date/Check off when completed
Notify students who qualify for financial waivers for the ACT and SAT	Mr. Shea	Counselors	College Board/ACT waiver requirements List of FARMS students	Meeting documentation Letters of Notification	June 2012
Offer on-site access to practice Accuplacer	Mr. Shea	Counselors	Computer Lab	Attendance Computer Lab calendar	June 2012
Increase advertisement of SAT and ACT test dates; research process for applying to become an ACT testing site	Mr. Shea	Counselors Teachers/Staff	Application Process	Announcements Classroom signs Parent Connect/Naviance	June 2012

				Principal's Newsletter	
				School Website	

-SAT/ACT/Accuplacer-

School Improvement Plan 2011-2012
Academic Charter

Goal Indicator: By the end of the 2011/2012 school year, all high schools will meet the graduation rate of 98% (for each NCLB student group) established by the Maryland State Department of Education).

Statement of Need:

- By June 2011, Old Mill High School met the graduation rate of 98.1%.
- By the end of the 2010-11 school year , 99.02% of the white students, 97.8% African American, 97.44% Asian , 90.63% Hispanic, 85.71% ELL, 86.11% SPED students met the graduation rate.

Annual Objective: By the end of the 2011-2012 school year, Old Mill High School will meet the graduation rate of 98% (for each NCLB student group established by the Maryland State Department of Education).

Action Steps	Person Responsible	Implementation Team	Resources/ Staff Development Needed	Monitoring Procedure/ Evidence	End Date/Check off when completed
Early identification of at-risk students (9 th grade Academy) *Bi-weekly grade reports *Create and use Freshman Academy Handbook *Match struggling students with a teacher mentor EQ	Mr. Tubman Ms. Reed	Teachers/Staff	Professional Dev. Training Meeting Calendar Binders/Handbook-Money	Student Data 9 th grade contact logs 9 th grade meeting minutes	June 2012
Facilitate mentoring program for African American males/females EQ	Mr. Tubman	Teachers/Staff Mentors	Mentors Planning Time	Student Target Lists Mentor documentation	June 2012
Facilitate counseling groups based on the "Needs Assessment" administered to the student body EQ	Ms. Chacra Ms. Klimes	Counselors Teachers/Staff	Planning Time Student Schedules	Lesson Plans Student Attendance	June 2012

				Needs Assessment Data	
Design and implement a tracking system to monitor student progress; War Room	Mr. Todd	Administration Counselors	War Room location Student Data	Data Charts Meeting Minutes	June 2012

-Graduation Rate-

**School Improvement Plan 2011-2012
Academic Charter**

Goal Indicator: By the end of 2011/2012 school year, 85% of all ninth grade students in each NCLB student group will have a cumulative Grade Point Average (GPA) of 2.0 or above.

Statement of Need:

- By the end of 2010/2011 school year, 78% of Old Mill High School ninth grade students in each NCLB student group had a cumulative Grade Point Average (GPA) of 2.0 or above.
- 84% of white ninth grade students had a GPA of 2.0 or higher while 69% were African American, 74% Hispanic, 80% Native American, and 93% were Asian.

Annual Objective: By the end of the 2011/2012 school year, 85% of Old Mill High School ninth grade students in each NCLB student group will have a cumulative Grade Point Average (GPA) of 2.0 or above.

Action Steps	Person Responsible	Implementation Team	Resources/Staff Development Needed	Monitor Procedure/ Evidence	End Date/Check off when completed
Continue implementation of 9 th grade Academy * Bi-weekly grade reports *Creation of Freshman Academy handbook *Match struggling students with teacher mentor *Create common classroom structures and routines-SCOOP *Monthly teacher meetings to share best practices and deliver professional development (TLC) *Host articulation meetings between middle and high school teams	Mr. Tubman Ms. Reed	9 th grade Academy Team Counselors	Scheduling 9 th grade teachers Meeting time	Staff feedback/ meeting minutes Student Data E-Free Logs Handbook/posters	June 2012 (Quarterly Review)
Continue E-Free Zone Campaign in order to cultivate an atmosphere positively targeting student achievement	Ms. Chacra	E-Free Team	Quarterly Grade Reports Scheduler	Grade Reports Master Calendar E-Free Team minutes Monthly incentives/activities	June 2012

Design and utilize common syllabi to implement collaborative/structured grading and redo policies among content teams	Mr. Tubman Ms. Reed	Content Teams	Planning Time	Content Team Syllabi Content Team minutes Grade Reports E-Free Logs/ Attendance	Quarterly Report Cards June 2012
Host vertical team meetings with middle school teachers to articulate needs of student groups/individual students EQ	Mr. Todd Mr. Tubman	DCs Content Teams	Planning Time Scheduler	Master Calendar Vertical Team minutes	June 2012

-Grade Point Average-
School Improvement Plan 2011-2012
Safe and Supportive Charter

Goal 2: All students will be educated in a safe, positive, and supportive learning environment with a focus on security enhancements that support system-wide safety and discipline standards.

Goal Indicator: By the end of the 2011/2012 school year, there will be a 20% reduction in the number of secondary students receiving one or more referrals, suspensions, and expulsions for each NCLB group.

Goal Indicator: By the end of the 2011/2012 school year, 100% of schools will demonstrate proficiency in the implementation of their site-based, approved Emergency Management Plan.

Goal Indicator: By the end of 2011/2012 school year, 98% of all OMHS students will arrive on time to class each day, and 94% will attend school daily.

School Improvement Plan 2011-2012
Safe and Supportive Charter

Goal Indicator: By the end of the 2011/2012 school year, there will be a 20% reduction in the number of secondary students receiving one or more referrals, suspensions, and expulsions for each NCLB group.

Statement of Need:

- By June 2011, 24.4% of Old Mill High School students received one or more referrals for each NCLB group.
- By June 2011, 33.3% of African American students, 11.3% of Asian students, 30.4% of Hispanic students, 25.0% of Native Americans, 19.6% of white students, 35.4% of special education students, 36.0% FARMS, 30.4% ELL students.
- By June 2011, 7.7% of Old Mill High School students received one or more suspensions for each NCLB group.

Annual Objective:

- By the end of the 2011/2012 school year, there will be a 20% reduction in the number of secondary students receiving one or more referrals, suspensions, and expulsions for each NCLB group. (2010-2011 Target Reduction Numbers below)
- 38.9% of African American students, 10.6% of Asian students, 33.1% of Hispanic students, 32.0% of Native Americans, 20.0% of white students, 37.1% of special education students and 35.8% of the FARMS students will receive one or more referrals for each NCLB group.
- 15.7% of African American students, 3.2% of Asian students, 9.9% of Hispanic students, 32.0% of Native Americans, 6.9% of white students, 16.7% of special education students and 16.5% of the FARMS students will receive one or more suspensions for each NCLB group.
- 2.24% of African American students, .56% of Hispanic students, .56% of white students, 2.0% of special education students and 2.0% of the FARMS students will receive one or more expulsions for each NCLB group.

Top 3 Referral Offenses (2010-2011)

- **INS (743)**
- **DSC (242)**
- **AB1 (206)**

Action Steps	Person Responsible	Implementation Team	Resources/ Staff Development Needed	Monitoring Procedure/ Evidence	End Date/Check off when completed
Continue Implementation of 9 th Grade Academy * Freshman Academy handbook * Match struggling students with teacher mentor * Created common classroom structures and routines- SCOOP *Created Advisory Mentor program to aide struggling learners *Host articulation meetings between middle and high school EQ	Mr. Tubman Ms. Reed	9 th Grade Teachers	Prof. Dev. Training Advisory Schedule	Academy Meeting Minutes Contact Logs Student Schedules Advisory Lessons	June 2012
Implement of Patriot Pride advisory lessons and incentives for staff and students *Staff of the Month *Teacher of the Month *Student of the Month *E-Free Student of the week	Ms. Boyd	Patriot Pride Team Teachers	Ginny Dolan Dr. Bernholz Monetary Donations Incentives	Advisory Lessons Patriot Pride Data PD Presentation Material	June 2012
Disseminate discipline data to the faculty/staff at faculty meetings in order to monitor referable offenses (Classroom vs Office managed)	Mr. Todd	Patriot Pride Team	Access to data-AACPS/SMS	Monthly Meeting minutes Soft Offenses- analyze data	June 2012
Utilize RST, other systematic supports in AACPS and the community for outreach and at-risk analysis of students	Ms. Perdomo	RST Team	SASI DMR Guidance PPW Health Room Administration	Number of referrals for identified students DMR log of student intervention	June 2012 (Monthly)

			Intervention techniques		
--	--	--	-------------------------	--	--

-Referrals, Suspension, Expulsions-

**School Improvement Plan 2011-2012
Safe and Supportive Charter**

Goal Indicator: By the end of the 2011/2012 school year, 100% of schools will demonstrate proficiency in the implementation of their site-based, approved Emergency Management Plan.

Statement of Need: By the end of 2010/2011 school year, ---% of the Old Mill High School staff and faculty demonstrated proficiency in the implementation of the site-based Emergency Management Plan.

Annual Objective: By the end of the 2011/2012 school year, 100% of the AACPS staff and faculty of Old Mill High School will demonstrate proficiency in the implementation of the site-based Emergency Management Plan.

Action Steps	Person Responsible	Implementation Team	Resources/ Staff Development Needed	Monitoring Procedure/ Evidence	End Date/Check off when completed
Perform Emergency response procedures effectively utilizing the Red Emergency Folders	Mr. Tubman	Safe and Supportive Charter Administration Teachers/Staff	Bob Yatsuk Red Emergency folders	Monthly drill practice and feedback Updated Emergency Folder notes	June 2012 (Monthly)

-Emergency Management Plan-

School Improvement Plan 2011-2012
Safe and Supportive Charter

Goal Indicator: By the end of 2011/2012 school year, 98% of all OMHS students will arrive on time to class each day, and 94% will attend school daily.

Statement of Need: By the end of 2010/2011 school year, ---% of all OMHS students arrived on time to class each day, and 90.07% attended school daily.

Annual Objective: By the end of the 2011/2012 school year, 98% of all OMHS students will arrive on time to class each day, and 94% will attend school daily.

Action Steps	Person Responsible	Implementation Team	Resources/ Staff Development Needed	Monitoring Procedure/ Evidence	End Date/Check off when completed
Implement Tardy Table on a daily basis between all transitions to monitor students arrival to class; perform hallway sweeps	Mr. Todd Mr. Procaccini	Administrative Team Mr. Ferragamo Advocates	Table Supervision Schedule Forms/Log book	SMS data Log Book	June 2012 (Quarterly Review)
Participate in monthly attendance meetings to monitor student attendance at OMHS *Teachers/staff, Guidance, Administration and Pupil Personnel Worker- follow Flow Map of protocols for reporting attendance issues*	Ms. Perdomo	Administrative Team Counselors Support Staff Nurse	Meeting Location Attendance Data	Meeting Minutes Administrative Letters PPW referrals	June 2012 (Monthly Review)

--	--	--	--	--	--

-Attendance-

School Improvement Plan 2011-2012
Community Engagement

Goal 3: The Old Mill High School staff, students, and community will create and expand activities that support the primary academic function of the school. We will create a positive school climate for all members of the Old Mill Community.

Goal Indicator: By the end of the 2011/2012 school year, 90% of parents and select community members will indicate that the school communicates effectively and are welcoming via interviews, surveys, focus group, etc.

Goal Indicator: By the end of 2011/2012 school year, each feeder system will host at least one non-traditional parental involvement activity in each feeder system involving elementary, middle, and high schools each year.

Goal Indicator: By the end of the 2011/2012 school year, Anne Arundel County Public Schools will increase the percentage of partnerships with community organizations from the current baseline.

School Improvement Plan 2011-2012
Community Engagement

Goal Indicator: By the end of the 2011/2012 school year, 90% of parents and select community members will indicate that the school communicates effectively and are welcoming via interviews, surveys, focus group, etc.

Statement of Need: By the end of 2010-2011 school year, ---% of the parents indicated school communicates effectively and are welcoming via interviews, surveys, focus group, etc..

Annual Objective: By the end of 2011-2012 school year, 90% of parents and select community members will indicate that the school communicates effectively and are welcoming via interviews, surveys, focus group, etc.

Action Steps	Person Responsible	Implementation Team	Resources/Staff Development Needed	Monitor Procedure/ Evidence	End Date/Check off when completed
Survey parents/community members regarding school culture/atmosphere	Ms. Boyd	Community Engagement Charter	County Survey Computer Access	School Communication (emails/ Connect-Ed, newsletters) Survey data	June 2012
Request parent email addresses in order to facilitate home/school communication and encourage use of Parent Connect; Volunteer Opportunities EQ	Ms. Boyd	Secretaries Counselors Teachers/Staff	Parent Connect forms Computer Access	Parent Connect Access Parent/Student feedback 9 th Grade Orientations/BTSN presentations	June 2012
Use various media outlets/forms to inform school staff and community stakeholders of OMHS events	Mr. Todd	Administration Counselors Teachers/Staff	Master Calendar Connect-Ed Email Addresses	Master Calendar Connect Ed message log Written articles	June 2012

			Website Newsletter		
--	--	--	-----------------------	--	--

-Communication-

School Improvement Plan 2011-2012 Community Engagement

Goal Indicator: By the end of 2011/2012 school year, each feeder system will host at least one non-traditional parental involvement activity in each feeder system involving elementary, middle, and high schools each year.

Statement of Need: By the end of 2010/2011 school year, Old Mill High School hosted 2 non-traditional parental involvement activities in the feeder system.

Annual Objective: Documentation of activities for 2011/2012 school year to meet/exceed objectives.

Action Steps	Person Responsible	Implementation Team	Resources/Staff Development Needed	Monitor Procedure/ Evidence	End Date/Check off when completed
OMHS will host Computer Nights for families in the community who do not have computer access at their residence; Algebra I and Guidance Nights EQ	Ms. Smith Ms. Chacra	Community Charter Administration Teachers/Staff	Contact PTSA for staffing support Lab availability Advertisements	Master Calendar Sign-In logs Advertisements (Emails, newsletter, website, Connect-Ed)	June 2012
OMHS will host a Multicultural Festival for staff, students, parents, and community members EQ	Ms. Spence	Multicultural Festival Team Community Charter Teachers/Staff	Business Contacts Participation surveys Advertisements Teacher Liaison Location	Participation Surveys Advertisements (Emails, Connect-Ed, newsletters, website) Staff, student, parent feedback Master Calendar	June 2012
OMHS hosts Art Attack- a Bi-Annual event showcasing student artwork- inclusion of	Ms. Kraus	Art Department	Advertisements	Advertisements (Emails, Connect-Ed, newsletters,	June 2012

elementary and middle school students as well as parent artwork		Community Charter	Location Master Calendar Invitations	website) Staff, student, parent feedback Master Calendar Participation of Artists log	
---	--	-------------------	--	--	--

- Non-Traditional Activities -

School Improvement Plan 2011-2012 Community Engagement

Goal Indicator: By the end of the 2011/2012 school year, Anne Arundel County Public Schools will increase the percentage of partnerships with community organizations from the current baseline.

Statement of Need: By the end of 2009/2010 school year, Old Mill High School partnered with ---- community organizations.

Annual Objective: Documentation of Partnerships for 2011/2012 school year to meet/exceed objectives.

Action Steps	Person Responsible	Implementation Team	Resources/ Staff Development Needed	Monitoring Procedure/ Evidence	End Date/Check off when completed
Green School Initiative- staff, students, parents, and community will participate in activities designed to promote the Green School Initiative <ul style="list-style-type: none"> Advisory Lessons for students Professional Development for teachers Outdoor Classroom grant Beautification Events 	Mr. Greene	Green School Team Community Engagement charter Teachers/Staff	Advisory Lessons Advertisements	Green School Application Outdoor Classroom grant School Newsletter Email Connect Ed messages Advisory Lessons PD training for staff	June 2012
OMHS will work to increase community partnerships by working with local organizations, UMUC, and building the ICST	Ms. Boyd	Community Engagement Charter	List of local businesses	Partnership List Donation Log	June 2012

for the Signature Program to support sponsorships and increase school donations		Ms. Langford Teacher/Staff	Letter of Introduction		
---	--	-------------------------------	------------------------	--	--

-Partnerships-

School Improvement Plan

Data Charts

Indicator	District Baseline	Student Groups	06-07 Baseline	07-08 Actual Scores	08-09 Actual Scores	09-10 Actual Scores	10-11 Actual Scores	11-12 Target	Source
9 TH Grade Algebra By the end of the 2011/2012 school year, 95% of all students in each NCLB student group will successfully complete both semesters of Algebra I by the end of the ninth grade.	Baseline: June 2006 – 80% of students have successfully completed both semesters of Algebra I by the end of ninth grade	All	81.6	78.7	83.1	83.8	83.9	95%	EDW AACPS SIP HIGH ALGEBRA
		Af Am	80.1	71.8	77.5	79.9	79.0	95%	
		Na Am	75.0	50.0	100	100	100.0	95%	
		Asian	89.8	90.5	84.6	97.1	96.3	95%	
		Hisp	71.1	66.7	80.6	73.7	70.4	95%	
		White	82.8	83.1	86.4	85.9	88.3	95%	
		ELL	80.8	53.3	72.7	46.2	50.0	95%	
		FARMS	68.4	66.0	73.0	69.3	75.6	95%	
		SpEd	65.3	63.9	82.4	75.5	77.8	95%	

Indicator	District Baseline	Student Groups	06-07 Baseline	07-08 Actual Scores	08-09 Target	08-09 Actual Scores	09-10 Target	09-10 Actual Scores	10-11 Target	10-11 Actual Scores	11-12 Target	Source
Algebra H.S.A. Beginning with the class of 2009 and thereafter, all diploma-bound students in each NCLB student group will pass each of the High School Assessments, or equivalent in Algebra, Biology, English 2, and Government by graduation.	Baseline established: 2006-2007 HSA scores Algebra	All	65.0	74.5	100%	89.7	100%	92.7	100%	92.02	100%	EDW AACPS SIP HIGH HSA
		Af Am	42.9	62.6	100%	83.2	100%	88.0	100%	85.1	100%	
		Na Am	100	-	100%	100	100%	100.0	100%	-	100%	
		Asian	85.7	82.1	100%	89.7	100%	97.8	100%	97.4	100%	
		Hisp	54.5	69.6	100%	91.4	100%	93.3	100%	93.5	100%	
		White	71.6	79.6	100%	93	100%	94.7	100%	95.4	100%	
		ELL	44.4	50.0	100%	25	100%	88.9	100%	83.3	100%	
		FARMS	52.5	61.5	100%	81	100%	85.4	100%	84.0	100%	
		SpEd	22.9	9.5	100%	28.6	100%	50.0	100%	46.7	100%	

Indicator	District Baseline	Student Groups	06-07 Baseline	07-08 Actual Scores	08-09 Target	08-09 Actual Scores	09-10 Target	09-10 Actual Scores	10-11 Target	10-11 Actual Scores	11-12 Target	Source
Biology H.S.A. Beginning with the class of 2009 and thereafter, all diploma-bound students in each NCLB student group will pass each of the High School Assessments, or equivalent in Algebra, Biology, English 2, Government by graduation	Baseline established: 2006-2007 HSA scores Biology	All	65.2	72.3	100%	85.6	100%	89.8	100%	91.5	100%	EDW AACPS SIP HIGH HSA
		Af Am	42.9	60.2	100%	75.7	100%	82.0	100%	85.6	100%	
		Na Am	100	50.0	100%	-	100%	100.0	100%	-	100%	
		Asian	69.4	69.2	100%	92.3	100%	93.3	100%	97.4	100%	
		Hisp	63.6	52.2	100%	85.7	100%	93.3	100%	93.5	100%	
		White	73.6	79.1	100%	90.2	100%	93.7	100%	94.1	100%	
		ELL	55.6	37.5	100%	75	100%	77.8	100%	83.3	100%	
		FARMS	39.0	58.5	100%	77.2	100%	77.1	100%	83.2	100%	
		SpEd	28.6	14.3	100%	46.4	100%	64.3	100%	60.0	100%	

Indicator	District Baseline	Student Groups	06-07 Baseline	07-08 Actual Scores	08-09 Target	08-09 Actual Scores	09-10 Target	09-10 Actual Scores	10-11 Target	10-11 Actual Scores	11-12 Target	Source
English H.S.A. Beginning with the class of 2009 and thereafter, all diploma-bound students in each NCLB student group will pass each of the High School Assessments, or equivalent in Algebra, Biology, English 2, and Government by graduation.	Baseline established: 2006-2007 HSA scores English	All	65.7	68.0	100%	87.1	100%	87.4	100%	91.0	100%	EDW AACPS SIP HIGH HSA
		Af Am	49.3	53.8	100%	80.9	100%	86.9	100%	93.4	100%	
		Na Am	100	50.0	100%	100	100%	100.0	100%	-	100%	
		Asian	71.4	64.1	100%	82.1	100%	84.4	100%	89.5	100%	
		Hisp	40.9	47.8	100%	97.1	100%	70.0	100%	87.1	100%	
		White	73.0	75.8	100%	89.8	100%	89.8	100%	96.0	100%	
		ELL	22.2	25.0	100%	25	100%	22.2	100%	16.7	100%	
		FARMS	44.1	53.8	100%	81	100%	74.0	100%	83.2	100%	
		SpEd	22.9	14.3	100%	50	100%	46.4	100%	53.3	100%	

Indicator	District Baseline	Student Groups	06-07 Baseline	07-08 Actual Scores	08-09 Target	08-09 Actual Scores	09-10 Target	09-10 Actual Scores	10-11 Target	10-11 Actual Scores	11-12 Target	Source
Government H.S.A. Beginning with the class of 2009 and thereafter, all diploma-bound students in each NCLB student group will pass each of the High School Assessments, or equivalent in Algebra, Biology, English 2, and Government by graduation.	Baseline established: 2006-2007 HSA scores Government	All	67.7	68.5	100%	89.9	100%	92.7	100%	92.8	100%	EDW AACPS SIP HIGH HSA
		Af Am	50.7	56.7	100%	83.8	100%	89.1	100%	86.7	100%	
		Na Am	100	100	100%	100	100%	100.0	100%	100	100%	
		Asian	67.3	74.4	100%	92.3	100%	93.3	100%	89.5	100%	
		Hisp	59.1	43.5	100%	94.3	100%	86.7	100%	96.8	100%	
		White	75.0	74.3	100%	92.4	100%	95.4	100%	96.0	100%	
		ELL	22.2	50.0	100%	25	100%	55.6	100%	83.3	100%	
		FARMS	49.2	56.9	100%	82.3	100%	85.4	100%	88.2	100%	
		SpEd	31.4	4.8	100%	60.7	100%	60.7	100%	63.3	100%	

Indicator	District Baseline	Student Groups	06-07 Baseline	07-08 Actual Scores	08-09 Target	08-09 Actual Scores	09-10 Actual Scores	10-11 Actual Scores	11-12 Target	Source
P.S.A.T. Participation By the end of the 2011/2012 school year, 95% of grade 9, 10, and 11 diploma-bound students, enrolled at the time of the test, in each NCLB student group will have participated in the PSAT	Baseline: October 2006 – 83% of grade 9, 10 and 11 diploma-bound students, enrolled at the time of the test, have participated in the PSAT	All	85.1	86.1	92%	86.3	83.8	85.4	95%	EDW AACPS SIP High PSAT
		Af Am	84.3	84.3	92%	84.0	80.6	82.6	95%	
		Na Am	87.5	66.7	92%	83.3	100	83.3	95%	
		Asian	95.5	91.9	92%	92.2	93.3	89.9	95%	
		Hisp	81.7	81.9	92%	75.7	73.5	80.5	95%	
		White	84.6	87.1	92%	88.2	85.7	87.3	95%	
		ELL	75.9	69.0	92%	60.6	67.6	51.7	95%	
		FARMS	78.6	79.9	92%	84.1	75.6	78.4	95%	
		SpEd	73.3	79.8	92%	78.8	75.9	75.8	95%	

*2010-2011: 1,634 students participated in the PSAT

Indicator	District Baseline	Student Groups	06-07 Baseline	07-08 Actual Scores	08-09 Target	08-09 Actual Scores	09-10 Actual Scores	10-11 Actual Scores	11-12 Target	Source
AP/ Honors Completion By the end of the 2011/2012 school year, 80% of all high school seniors in each NCLB student group will have completed at least one AP/IB or Honors course	Baseline: June 2006 – 49% of high school seniors in each NCLB student group have completed at least one AP course. Baseline for percentage of seniors completing at least one honors/IB class to be established in 2007/2008.	All	76.3	81.0	78%	78.2	80.9	85.4	80%	EDW AACPS SIP High AP/IB/Honors Be sure to select Test Category AP-IB-Honors
		Af Am	60.1	72.8	78%	69.7	72.1	82.6	80%	
		Na Am	100	0	78%	66.7	88.2	83.3	80%	
		Asian	94.0	89.7	78%	87.4	89.1	89.9	80%	
		Hisp	90.9	82.6	78%	79.6	77.2	80.5	80%	
		White	79.4	84.0	78%	80.3	83.2	87.3	80%	
		ELL	-	75.0	78%	48.1	45.7	51.7	80%	
		FARMS	57.6	71.2	78%	62.7	66.9	78.4	80%	
		SpEd	31.7	17.4	78%	23.3	24.8	75.8	80%	

Indicator	District Baseline	Student Groups	06-07 Baseline	07-08 Actual Scores	08-09 Target	08-09 Actual Scores	09-10 Actual Scores	10-11 Actual Scores	11-12 Target	Source
AP Exam Participation By the end of the 2011/2012 school year, 100% of all high school seniors in each NCLB student group who have been enrolled in at least one AP/IB course will have sat for an AP/IB examination.	Baseline: June 2006 –62% of high school seniors in each NCLB student group who have been enrolled in an AP/IB course sat for an AP/IB examination.	All	67.4	71.7	89%	80.3	85.1	86.4	100%	EDW AACPS SIP High AP/IB/Honors
		Af Am	46.4	50.6	89%	68.1	72.0	75.8	100%	
		Na Am	100	0	89%	83.3	100	80.0	100%	
		Asian	82.1	89.3	89%	84.7	84.2	91.3	100%	
		Hisp	46.7	46.7	89%	79.8	92.3	75.5	100%	
		White	72.0	78.5	89%	82.6	90.8	89.5	100%	
		ELL	25.0	50.0	89%	88.9	25.0	62.5	100%	
		FARMS	54.2	64.3	89%	77.1	82.4	82.0	100%	
		SpEd	33.3	0	89%	55.6	100	63.6	85%	

Indicator	District Baseline	Student Groups	06-07 Baseline	07-08 Actual Scores	08-09 Target	08-09 Actual Scores	09-10 Actual Scores	10-11 Actual Scores	11-12 Target	Source
AP Exam Scoring 3 or better By the end of the 2011/2012 school year, 75% of all high school seniors in each NCLB student group who have sat for AP or IB examination will have earned 3 or better on AP examinations or 4 or better on IB examinations.	Baseline: June 2006 –62% of high school seniors in each NCLB student group who have been enrolled in an AP/IB course sat for an AP/IB examination.	All	68.8	72.8	59%	60.4	59.5	51.8	75%	EDW AACPS SIP High AP/IB/Honors
		Af Am	53.8	56.4	59%	42.2	39.0	30.1	75%	
		Na Am	100	0	59%	40	85.7	-	75%	
		Asian	68.8	72.0	59%	65.8	61.4	64.3	75%	
		Hisp	57.1	28.6	59%	58.6	65.6	66.7	75%	
		White	71.9	78.5	59%	63.4	62.3	57.1	75%	
		ELL	-	50.0	59%	37.5	25.0	-	75%	
		FARMS	61.5	72.2	59%	36.1	39.9	41.2	75%	
		SpEd	100	0	59%	50	13.3	100	75%	

Indicator	District Baseline	Student Groups	06-07 Baseline	07-08 Actual Scores	08-09 Target	08-09 Actual Scores	09-10 Actual Scores	10-11 Actual Scores	11-12 Target	Source
SAT/ ACT Participation By the end of the 2011/2012 school year, 75% of all high school seniors in each NCLB student group, in each high school, will take the SAT, ACT or the Accuplacer.	Baseline: June 2006 – 49 % of high school seniors in each high school have taken the SAT. Baseline percentage of high school seniors in each high school taking ACT and Accuplacer to be established in 2007/2008.	All	56.2	52.9	64%	64.9	58.4	60.5	75%	EDW AACPS SIP High College Placement test
		Af Am	53.8	51.4	64%	64.2	58.0	33.0	75%	
		Na Am	100	0	64%	50	47.1	0.3	75%	
		Asian	80.0	71.8	64%	87.2	72.0	12	75%	
		Hisp	27.3	30.4	64%	54.3	45.5	3.0	75%	
		White	55.4	53.2	64%	63.8	58.5	48	75%	
		ELL	22.2	37.5	64%	25	10.9	1.0	75%	
		FARMS	40.7	36.4	64%	51.9	42.8	-	75%	
SpEd	17.1	0	64%	10.7	12.9	2.0	75%			

Indicator	District Baseline	Student Groups	06-07 Baseline	07-08 Actual Scores	08-09 Target	08-09 Actual Scores	09-10 Actual Scores	10-11 Actual Scores	11-12 Target	Source
By the end of the 2011/2012 school year, all high schools will meet the graduation rate of 98% (for each NCLB student group) established by the Maryland State Department of Education.	Baseline: June 2006 – 86% graduation rate	All	87.4	91.19	94%	90.8	88.23	98.1	98%	(#11) MDreportcard Graduation rate
		Af Am	87.0	92.16	94%	92.2	90.2	97.8	98%	
		Na Am	-		94%	-	-	-	98%	
		Asian	92.9		94%	100	91.84	97.44	98%	
		Hisp	90.5	-	94%	92.1	85.71	90.63	98%	
		White	86.9	90.84	94%	89.1	86.59	99.02	98%	
		ELL	100	-	94%	100	76.92	85.71	98%	
		FARMS	89.5	94.44	94%	91.4	85.59	-	98%	
		SpEd	96.2	78.13	94%	67.6	61.54	86.11	98%	

Indicator	District Baseline	Student Groups	06-07 Baseline	07-08 Actual Scores	08-09 Target	08-09 Actual Scores	09-10 Actual Scores	10-11 Actual Scores	11-12 Target	Source
Seniors Attending a 2 or 4 year college										
By the end of the 2011/2012 school year, 80% of seniors in each NCLB student group will indicate their intent to attend a 2-year or 4-year college based upon the Maryland State Department of Education senior exit survey.	Baseline: June 2006 – 59% of seniors have indicated their intent to attend a 2-year or 4-year college based upon the Maryland State Department of Education senior exit survey	All	56.6	82	80%	79.9	80	79	80%	Exit survey given to graduating seniors given by School Counseling Office

Indicator	District Baseline	Student Groups	06-07 Baseline	07-08 Actual Scores	08-09 Target	08-09 Actual Scores	09-10 Actual Scores	10-11 Actual Scores	11-12 Target	Source
By the end of the 2011/2012 school year, 85% of all ninth grade students in each NCLB student group will have a cumulative Grade Point Average (GPA) of 2.0 or above.	Baseline 2006/2007 First Semester—64% *Indicates fewer than five members in a defined group.	All	65	66.2	71%	64	66	78.0	85%	Report from Dr. Maxwell
		Af Am	55	56.9	71%	54	58	69.0	85%	
		Na Am	75	-	71%	100	100	80.0	85%	
		Asian	88	83.3	71%	85	92	93.0	85%	
		Hisp	60	51.2	71%	55	66	74.0	85%	
		White	69	71.9	71%	70	69	84.0	85%	
		ELL		53.3	71%		-	-	85%	
		FARMS		49.0	71%		-	-	85%	
		SpEd		33.8	71%		-	-	85%	

Indicator	District Baseline	Student Groups	06-07 Baseline	07-08 Actual Scores	08-09 Actual Scores	09-10 Target Reduction 15%	09-10 Actual Scores	10-11 Actual Scores	11-12 Target Reduction 20%	Source
Referrals										
By the end of the 2011-12 school year, there will be a 20% reduction in the number of secondary students receiving one or more referrals for each NCLB group.	June 2006: 13,521 referrals	All	32.2	31.0	31.1	27.4	30.3	24.4	25.8	EDW AACPS SIP HIGH Safe and Supportive Learning Environment.
		Af Am	48.6	45.4	43.8	41.3	42.8	33.3	38.9	
		Na Am	40.0	40.0	16.7	34.0	26.9	25.0	23.0	
		Asian	13.3	13.7	21.3	11.3	17.0	11.3	10.6	
		Hisp	41.4	35.4	32.5	35.2	29.8	30.4	33.1	
		White	25.0	24.1	24.1	21.25	26.5	19.6	20.0	
		ELL	27.8	17.2	19.5	23.6	25.9	30.4	22.2	
		FARMS	44.7	44.4	41.9	38.0	45.3	36.0	35.8	
		SpEd	46.4	44.4	36	39.4	37.6	35.4	37.1	

Indicator	District Baseline	Student Groups	06-07 Baseline	07-08 Actual Scores	08-09 Actual Scores	09-10 Target Reduction 15%	09-10 Actual Scores	10-11 Actual Scores	11-12 Target Reduction Rate 20%	Source
By the end of the 2011-12 school year, there will be a 20% reduction in the number of secondary students receiving one or more suspensions for each NCLB group.	June 2006: 6,259 suspensions	All	11.7	13.5	12.3	9.9	14.7	7.7	9.4	EDW AACPS SIP HIGH Safe and Supportive Learning Environment
		Af Am	19.6	19.7	18.9	16.7	24.3	10.1	15.7	
		Na Am	-	40.0	16.9	34.0	20.5	25.0	32.0	
		Asian	4.0	3.8	6.1	3.4	5.5	0.8	3.2	
		Hisp	12.4	12.7	11	10.5	13.5	12.5	9.9	
		White	8.6	11.0	9	7.3	11.7	6.5	6.9	
		ELL	8.5	8.6	4.9	7.2	13.7	15.2	6.8	
		FARMS	20.6	21.4	17.7	17.5	25.0	10.7	16.5	
		SpEd	20.9	24.8	18.9	17.8	24.3	13.1	16.7	

Indicator	District Baseline	Student Groups	06-07 Baseline	07-08 Actual Scores	08-09 Actual Scores	09-10 Target Reduction 15%	09-10 Actual Scores	10-11 Actual Scores	11-12 Target Red. 20%	Source
Expulsions By the end of the 2011-12 school year, there will be a 20% reduction in the number of secondary students receiving one or more expulsions for each NCLB group.	June 2006: 326 expulsions	All	1.3	.2	.2	1.1	0.1	-	1.04	EDW AACPS SIP HIGH Safe and Supportive Learning Environment.
		Af Am	2.8	.5	.5	2.38	0.2	-	2.24	
		Na Am	-	-	-	-	-	-	-	
		Asian	-	-	-	-	-	-	-	
		Hisp	.7	-	-	.6	0.0	-	.56	
		White	.7	-	-	.6	-	0.1	.56	
		ELL	1.4	-	-	1.2	0.1	-	1.12	
		FARMS	2.5	-	-	2.1	0.0	-	2.0	
		SpEd	2.5	-	-	2.1	0.1	-	2.0	

Indicator	District Baseline	Student Groups	07-08 Baseline	08-09 Target	08-09 Actual Scores	09-10 Target	09-10 Actual Scores	10-11 Target	10-11 Actual Scores	11-12 Target	11-12 Actual Scores	Source SASI + Dr. Pish
				Needed to meet 94%		Needed to meet 94%		Needed to meet 94%		Needed to meet 94%		
<p>Data collected and reported to MSDE from first day of school to March 15.</p> <p>This is the official Attendance Rates reported to MSDE.</p> <p>Gray shading indicates met state expectations.</p>	<p>State AYP Proficient Percentage is 94%</p>	All	93.9%	94%	93.7%	94%	94.2%	94%	90.07	94%		<p>Attendance</p>
		9 th Grade				94%		94%	85.4	94%		
		10 th Grade		94%		94%		94%	88.1	94%		
		11 th Grade		94%		94%		94%	91.9	94%		
		12 th Grade		94%		94%		94%	94.9	94%		
		Af Am	94.0%	94%	93.3%	94%	93.7%	94%	87.3	94%		
		Na Am	95.8%	94%	92.5%	94%	97.3%	94%	100	94%		
		Asian	95.3%	94%	94.8%	94%	95.4%	94%	85.5	94%		
		Hisp	93.1%	94%	92.8%	94%	93.0%	94%	92.9	94%		
		White	93.7%	94%	94.0%	94%	94.4%	94%	91.7	94%		
		ELL	95.5%	94%	94.9%	94%	95.5%	94%	84.8	94%		
		FARMS	91.9%		92.1%		92.2%		91.0			
		SpEd	91.1%	94%	92.1%	94%	92.3%	94%	88.9	94%		